

# REAL STEEL



**MEMBERSHIP 2026**



# Join the team - with a Real Steel MEMBERSHIP for 2026.

*Your Ascot Park Hotel Southern Steel are back with a star-studded lineup, led by Head Coach Wendy Frew, ready to take on the best in netball's elite ANZ Premiership competition.*

*With a dynamic mix of experienced REAL STEEL campaigners and exciting new talent, this season promises more excitement and more to play for than ever before.*

*A REAL STEEL Membership for 2026 will put you exactly where you need to be - right here with us for a thrilling home game series that's got it all!*

# REAL

# STEEL



# REAL STEEL



***“We are so excited for the 2026 season .***

*With a fantastic recruitment phase and a powerful squad in place, the team is ready to push hard in the months to come.*

*We can't wait to see you all again in 2026.* ***”***

***Wendy Frew***  
*Head Coach*



# REAL STEEL

## ANZ Premiership 2026 Season

**STEEL v TACTIX**

**Saturday 11 April, 7.00pm**  
Wolfbrook Arena, Christchurch

**STEEL v STARS**

**Saturday 18 April, 4.00pm**  
ILT Stadium Southland, Invercargill

Mbr

**STEEL v MYSTICS**

**Sunday 26 April, 4.00pm**  
Eventfinda Stadium, Auckland

**STEEL v PULSE**

**Saturday 2 May, 7.00pm**  
ILT Stadium Southland, Invercargill

Mbr

**STEEL v MAGIC**

**Saturday 9 May, 4.00pm**  
Baypark Arena, Tauranga

**STEEL v PULSE**

**Sunday 17 May, 4.00pm**  
TSB Arena, Wellington

**STEEL v MAGIC**

**Saturday 23 May, 4.00pm**  
The Edgar Centre, Dunedin

**STEEL v MYSTICS**

**Sunday 31 May, 4.00pm**  
ILT Stadium Southland, Invercargill

Mbr

**STEEL v STARS**

**Sunday 7 June, 4.00pm**  
Pulman Arena, Auckland

**STEEL v TACTIX**

**Sunday 14 June, 4.00pm**  
ILT Stadium Southland, Invercargill

Mbr



# REAL

# STEEL



Georgia  
**Heffernan**



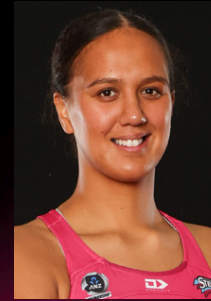
Kimiora  
**Poi**



Carys  
**Stythe**



Aliyah  
**Dunn**



Renee  
**Savai'inaea**



Serina  
**Daunakamakama**



Josie  
**Bingham**



Khanye'-Lii  
**Munro - Nonoa**



Jess  
**Milne**



Ashleigh  
**Poi**





**Reserve your  
own prime  
seat and enjoy  
exclusive benefits  
right through the  
season.**

***Membership includes:***

- *Reserved seat to our four ANZ Premiership round-robin INVERCARGILL home games*
- *10% discount on Steel merchandise, for Juniors a set of Steel player cards + stickers*
- *Invitation to a VIP Members Event - Open Training*
- *Exclusive digital content*
- *E-newsletters*
- *Gate ticket savings*
- *Preferential purchasing for home ANZ Premiership finals and home Silver Ferns tests*
- *Members Discount at E Hayes and Sons Invercargill store - see [ehayes.co.nz/steelmembers](http://ehayes.co.nz/steelmembers) for details*

***Student*** - High School or Tertiary Education.

***Junior*** - 3-15 Years

# REAL STEEL

**Invercargill**  
Membership  
4 Games

<b>Adult</b>	<b>\$140</b>
<b>Student</b>	<b>\$75</b>
<b>Junior</b>	<b>\$65</b>

*Plus ticketing service fee*



# REAL STEEL



*Make sure you stay in touch with all things Steel on our website for all the action right through the season - draw, merchandise, competitions, results, news and much more!*

*Plus, follow our social media channels for the very latest news and content.*

*All 2026 Members will receive Steel VIP Member updates via email from : [southernsteel@flicker.co.nz](mailto:southernsteel@flicker.co.nz)*

*Please save this email address to your contacts to avoid emails going to your junk/spam folders.*

*But most of all don't miss the action, intensity, drama and sheer excitement of a LIVE Steel home game.*

**SIGN UP TO ENJOY THE VALUE OF A REAL STEEL MEMBERSHIP - TODAY!**

 [facebook.com/SouthernSteelNetball](https://facebook.com/SouthernSteelNetball)

 [instagram.com/sthrnsteel](https://instagram.com/sthrnsteel)

 [www.southernsteel.co.nz](http://www.southernsteel.co.nz)

Photos © Michael Bradley Photography

